

How to Search for a Facility on Dialysis Facility Compare

You must have access to the Internet to use Dialysis Facility Compare (DFC). You may reach DFC by going to www.medicare.gov/dialysis/home.asp. This will bring you to the welcome page of DFC, which is also the “search” page. When you scroll down you will see “How would you like to Find a Dialysis Facility?” in red letters. This is the first step in locating a facility.

How would you like to Find a Dialysis Facility?

By Name I want to find a dialysis facility by entering all/some of its name:
Dialysis Facility Name

By Proximity I want to find all dialysis facilities within a certain distance of:
City
ZIP Code

By Geography I want to find all dialysis facilities within a:
State
County

If you want to find the closest dialysis facilities to a specific location you will need to look below the column titled “By Proximity” and click on either “City” or “ZIP code”.

You may also search by “Dialysis Facility Name,” “State,” or “County.”

For this example we are going to click on Zip Code.

Next you will need to enter a ZIP code (or city if that is what you chose) and the maximum distance from this ZIP code that you want to search for dialysis facilities. Then click on “Next Step.”

ZIP Code Search

Please enter a ZIP Code and select the maximum distance from that ZIP Code that you want to search for dialysis facilities:

ZIP Code:

Distance:

You will then see a box indicating the number of facilities that meet your criteria. If this number is zero, you may start your search over or hit the “back” button on your browser and enter a larger number in the “Distance” box so that your search will be broader.

[Find](#) [About](#) [Data Details](#) [Resources](#)

Find > Facility Select

Dialysis Facility Search

There are **19** dialysis facilities available within 10 miles of ZIP Code 80203.

Your search results may show dialysis facilities in more than one State based on the distance you chose.

- Select one or more dialysis facilities, up to 10 in total, then click "Next Step" at the [bottom of the page](#).

To return to the previous page, please click on "Service Select" link on the blue toolbar above.

After the search has come up with a number of facilities, you will need to scroll down from the top of the page to see the listed results.

Those facilities that are closest to your specified ZIP code will be displayed at the top.

If you would prefer to sort facilities alphabetically you should click on "Sort by Facility Name."

[Sort By Distance](#) - [Sort By Facility Name](#)

Dialysis Facilities			
	Name	Address	Phone Number
<input type="checkbox"/>	UNIVERSITY HOSPITAL - DIALYSIS	4200 E. 9TH AVENUE BOX A021-230 DENVER, CO 80262 0.6 miles	(303) 372-6550
<input type="checkbox"/>	THE CHILDRENS HOSPITAL KIDNEY CTR.	1056 EAST 19TH AVENUE DENVER, CO 80218 0.6 miles	(303) 861-3932
<input type="checkbox"/>	RENAL NURSE ASSOCIATES, LLC	1440 VINE STREET, THIRD FLOOR DENVER, CO 80206 1.6 miles	(303) 403-0781
<input type="checkbox"/>	RCG - CENTRAL DENVER	765 S. BROADWAY DENVER, CO 80209 1.9 miles	(303) 765-1699
<input type="checkbox"/>	DAVITA - DENVER DIALYSIS	2900 DOWNING ST STE C DENVER, CO 80205 2.1 miles	(303) 292-0303
<input type="checkbox"/>	DAVITA- BELCARO DIALYSIS	755 SOUTH COLORADO BLVD DENVER, CO 80246 3.3 miles	(303) 777-2844

Check the box next to the facilities you would like to compare or on which you would like more information. You may select up to ten facilities. Click "Next Step" at the bottom of the page.

<input checked="" type="checkbox"/>	DAVITA - AURORA	1411 SOUTH POTOMAC SUITE 100 AURORA, CO 80012 8 miles	(303) 368-1911
<input type="checkbox"/>	DAVITA - COMMERCE CITY	6320 HOLLY ST COMMERCE CITY, CO 80022 8.4 miles	(303) 853-4300
<input checked="" type="checkbox"/>	RCG - AURORA	962 POTAMAC CIRCLE AURORA, CO 80011 9.3 miles	(303) 340-1398
<input type="checkbox"/>	DAVITA - THORNTON	8800 FOX DRIVE THORNTON, CO 80260 9.6 miles	(303) 430-7020

Note: Distances are calculated from the center of your search criteria to the center of the ZIP Code for each dialysis facility and are only approximations.

[Reset Checkboxes](#)

[Next Step >](#)

[< Previous Page](#)

A search summary screen will come up next. You will need to scroll down to view location information, phone numbers, and the types of dialysis offered.

Characteristics of the Dialysis Facilities		
	DAVITA - AURORA	RCG - AURORA
Address	1411 SOUTH POTOMAC SUITE 100 AURORA, CO 80012 8 Miles Mapping/Directions	962 POTAMAC CIRCLE AURORA, CO 80011 9.3 Miles Mapping/Directions
Phone Number	(303) 368-1911	(303) 340-1398
Shifts Starting After 5 PM	YES	NO
Number of Hemodialysis Stations	27	24
In-Center Hemodialysis	YES	YES
Peritoneal Dialysis	NO	NO
Home Hemodialysis Training	NO	NO
Ownership Type	Profit	Profit
Corporate Name	DAVITA	RENAL CARE GROUP INC.
Facility's First Date of Medicare Certification	September 01, 1988	February 02, 2005
Link to Quality Information	Compare Quality	Compare Quality
Facility Profile	View all information about this facility	View all information about this facility

If you are looking for a map and directions to a facility you should click on "Mapping/Directions."

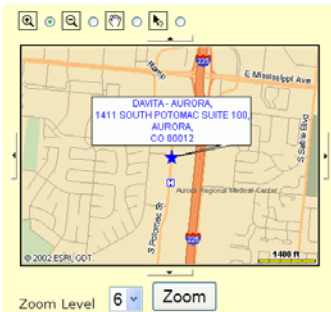
Click on the "Compare Quality" for comparative quality indicators for the facility

Note: Distances are calculated from the center of your search criteria to the center of the ZIP Code for each dialysis facility and are only approximations.

Find Another Facility

Mapping/Directions

This page displays a map of the location you have selected. If you would like to get driving directions to this location, please fill out the form to the right of the map with your starting address and click "Get Directions".



To get directions to this location:
 DAVITA - AURORA
 1411 SOUTH POTOMAC SUITE 100
 AURORA, CO 80012

Enter your starting address:

Street Address:

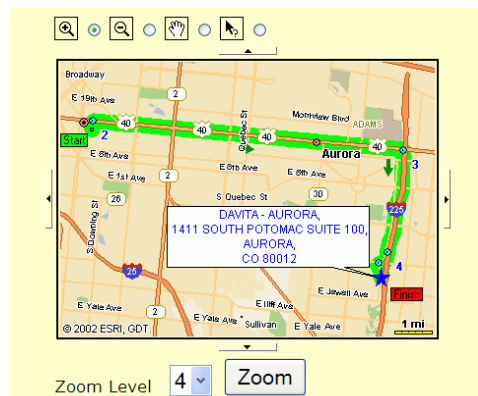
City:

State:

ZIP Code:

You will then see a map of the location you have selected. To get driving directions to this location, you should enter your starting address in the form to the right of the map and click "Get Directions."

Next you will see a map with highlighted directions for how to get to the facility from a specific address. You may use the buttons above or below the map to zoom in or see other parts of the map.



Text only

Select	#	Directions
<input type="button" value="1"/>	1	Go North on Pennsylvania St Drive 0.2 mile(s) ~ < 1 minute
<input type="button" value="2"/>	2	Go East on Us Hwy 40 (E Colfax Ave) Drive 8.2 mile(s) ~ 10 minute(s)
<input type="button" value="3"/>	3	Take ramp and go South on I 225 Drive 2.8 mile(s) ~ 3 minute(s)
<input type="button" value="4"/>	4	At exit 7 take ramp to E Mississippi Ave Drive 0.4 mile(s) ~ 1 minute(s)
<input type="button" value="5"/>	5	Turn left on S Potomac St Drive 0.4 mile(s) ~ < 1 minute

Below the map you will be given the option of printing text only directions, text with a full route map, or text with full route plus segments (maps showing each turn).

After you have printed the directions, you may look at another facility by repeatedly hitting the “back” button on your browser until you have returned to the original list of facilities.

Look at the information on Dialysis Facility Compare carefully. Use it with other information as you compare facilities and decide where to get dialysis. You should also:

- Visit facilities that interest you,
- Talk to dialysis facility staff and patients,
- Talk to your doctor and,
- Contact kidney disease groups. The phone numbers and website for some of the kidney disease groups are found in the Resources section of this website.

Print out information you will find useful on this website and bring it with you when you visit facilities or talk with doctors, staff, other patients, or kidney disease groups.